

2025 Multi-State Behavioral Health Initiative – Methods Documentation

Version: 1.0

Release: April 2025

Table of Contents

Methods.....	1
Data Source	1
Population Stratifications.....	1
Measure Specifications	5
Reporting Framework.....	8
Appendix A. SAMHSA Categories & ICD-10-CM Codes.....	9

About Onpoint’s Collective Impact Initiative

Onpoint’s Collective Impact initiative is an ongoing program dedicated to leveraging our nonprofit mission to drive meaningful change for our clients and communities. As an independent health data organization, we believe in the power of collaboration to create innovative, data-driven solutions that support healthcare transformation. The Collective Impact initiative provides pro bono solutions that deliver insights, deepen understanding, and demonstrate the value of APCDs nationwide.

About the 2025 Multi-State Behavioral Health Initiative

The 2025 Multi-State Behavioral Health Initiative is an exciting collaboration between Onpoint and five of our state all-payer claims database (APCD) clients – Connecticut, Maryland, Minnesota, Vermont, and Washington. Working together to leverage their collective data for systemwide healthcare improvement, we developed a series of interactive dashboards that explore the relationships between behavioral health, other medical conditions, and social drivers of health across key geographies.

The following document provides an overview of the methodology used to generate the 2025 Multi-State Behavioral Health Initiative dashboards, including data sources, stratifications and dimensions, measures, and diagnosis codes used to identify specific behavioral health conditions based on guidance from the U.S. Substance Abuse and Mental Health Services Administration (SAMHSA).

Methods

Data Source

The study data source was restricted to all-payer claims database (APCD) claims available in the most recent consolidated data extract for each participating client, with claims for services through December 2022, including three months of claims run-out.

The study excludes non-resident members – referred to as “insured patients” in the dashboards’ narrative – from each state’s data. For example, out-of-state residents who were reported in the claims data for Vermont’s APCD are excluded from Vermont’s analysis. Healthcare provided outside of the state for state residents, however, is *included* in the study.

Blinding rules have been applied to the results in compliance with standards from the U.S. Centers for Medicare & Medicaid Services (CMS). Specifically, any cell with a numerator or denominator value less than 11 was blinded for this study.

Please note that Onpoint has been evaluating the submissions of substance use disorder (SUD) claims for our APCD clients as part of our ongoing data quality initiatives. These data quality findings were used to evaluate whether each state’s SUD data was sufficient to support reporting on SUD. If the data did not support SUD analysis, the analysis for that state was limited to only mental health conditions. Cross-state analyses were stratified by mental health and SUD separately to enable comparisons where feasible.

Population Stratifications

The following section offers detail regarding the multiple population stratifications used in the reporting and analysis.

Reporting Period

To ensure that the most current and complete data available were used, the dashboards’ employ consistent reporting periods based on 12-month time periods based on incurred date (i.e., date of service), each with a consistent three-month period of paid run-out (see **Table 1**) to capture negotiated payment amounts.

Table 1. Time Periods Used in the 2025 Multi-State Behavioral Health Initiative Dashboards

Incurred/Paid Start Date	Incurred End Date	Paid (Run-Out) End Date
1/1/2022	12/31/2022	3/31/2023
1/1/2021	12/31/2021	3/31/2022
1/1/2020	12/31/2020	3/31/2021
1/1/2019	12/31/2019	3/31/2020



Age Groups & Sex

The following age stratifications were used for the analysis:

- 1–14 years
- 15–25 years
- 26–45 years
- 46–64 years
- 65+ years

Infants who were less than one year of age were excluded from this study.

Data on the sex of patients were included in the study.

Payer Type

Data was stratified by the following payer type types:

- Commercial
- Medicaid (recognized as “Minnesota Health Care Programs” in Minnesota’s dashboards)
- Medicare

Members covered by commercial plans for Medicare Advantage were assigned to Medicare, and members covered by commercial plans for Medicaid managed care were assigned to Medicaid. States were required to have a full set of data from 2019 through 2022 for a payer type to include that payer type in the analysis. For example, if a state had Medicare data from 2019 through only 2021, Medicare data was not included for any reporting period to ensure consistent trend reporting.

Geography of Residence

Members were assigned to one of the following counties based on their reported county of residence (as of the last month of each reporting period). We used a county-to-ZIP-code crosswalk to attribute patients to counties. (Note that residents are reported by planning region in Connecticut’s dashboard’s due to the state’s shift from counties to planning regions.)

Rural/Urban

Members also were assigned to one of the following rural-urban commuting area (RUCA) codes based on their reported ZIP code of residence (as of the last month of each reporting period). The RUCAs were aggregated into four categories (see **Table 2**) based on preliminary data analysis and in keeping with [Scheme 1 recommended by the Washington Department of Public Health](#), which has been used in previous Onpoint reporting. The aggregation of these categories into four groupings reduced the need for blinding when measures were calculated for less populated areas. A comparison of the Urban Core RUCA to the Small Town or Rural RUCA was provided in some dashboards to provide a simple ratio of how care was performed in these different settings.

Table 2. Groupings of Rural-Urban Commuting Area (RUCA) Codes in the 2025 Dashboards

RUCA	Description	Group
1	Metropolitan area core: primary flow within an urbanized area (UA)	Urban Core
2	Metropolitan area high commuting: primary flow 30% or more to a UA	Suburban



RUCA	Description	Group
3	Metropolitan area low commuting: primary flow 10% to 30% to a UA	Suburban
4	Micropolitan area core: primary flow within an Urban Cluster of 10,000 to 49,999 (large UC)	Large Rural
5	Micropolitan high commuting: primary flow 30% or more to a large UC	Large Rural
6	Micropolitan low commuting: primary flow 10% to 30% to a large UC	Large Rural
7	Small town core: primary flow within an Urban Cluster of 2,500 to 9,999 (small UC)	Small Town or Rural
8	Small town high commuting: primary flow 30% or more to a small UC	Small Town or Rural
9	Small town low commuting: primary flow 10% to 30% to a small UC	Small Town or Rural
10	Rural areas: primary flow to a tract outside a UA or UC	Small Town or Rural
99	Not coded: Census tract has zero population and no rural-urban identifier information	N/A

Social Vulnerability Index

Members also were assigned to a Social Vulnerability Index (SVI) quartile based on their reported ZIP code of residence (as of the last month of each reporting period). The Social Vulnerability Index is a measure maintained by the U.S. Centers for Disease Control and Prevention (CDC) and the Agency for Toxic Substances and Disease Registry (ATSDR). It uses variables from the American Community Survey (ACS) of the U.S. Census to identify communities that may need additional support.

Communities are ranked at the census-tract level. For this reporting, census tract rankings were rolled up to the ZIP code level to enable use with APCD data. We then calculated the level of vulnerability by quartile, with Quartile 1 indicating the lowest level of vulnerability and Quartile 4 indicating the highest level of vulnerability. SVI quartile was used as a stratification in this reporting.

Along with the overall SVI, we also calculated quartiles for the following four SVI-related themes based on ZIP code:

- Socioeconomic status
- Household characteristics
- Minority status and language
- Housing and transportation

Additionally, we identified ZIP codes in the top 10 percent and bottom 10 percent for each SVI theme to enable comparisons across certain measures. SVI metrics were calculated within the state to ensure that each state had sufficient ZIP codes in each theme to support reporting. ZIP codes in the top and bottom 10 percent were then used to calculate the ratios in the utilization measures between the most vulnerable and least vulnerable ZIP codes.

Subcategories of Mental Health Disorders

Classification of members with mental health and substance use disorders were based on methods described in the October 2022 [“Mental Health Annual Report 2015–2020 – Use of Mental Health Services: National Client-Level Data”](#) report from the U.S. Substance Abuse and Mental Health Services Administration (SAMHSA). The categories and the ICD-10-CM codes for each category were drawn from Appendix E in the provided SAMHSA report. Onpoint flagged members if they had at least one inpatient or at least two outpatient claims reported to the APCD with any of the relevant diagnosis codes during the current or prior year – a method consistent with other reporting around conditions.



The list of ICD-10-CM codes from the SAMHSA report has been provided in [Appendix A](#) for the SAMHSA categories listed below in **Table 3**.

Table 3. SAMHSA Categories & Descriptions Used in Mental Health Dashboards

Category	Name	Text
5.1	Trauma- and stressor-related disorders	This category includes adjustment disorders, acute stress disorders, and post-traumatic stress disorders.
5.2	Anxiety disorders	This category includes anxiety disorders, phobias, and obsessive-compulsive disorders.
5.3.3	Attention deficit / hyperactivity	This category includes conditions characterized by challenges with inattention, hyperactivity, and impulsivity.
5.6.3	Pervasive developmental disorders (Autism spectrum disorder)	Autism spectrum disorder is a neurological and developmental disorder that affects how people interact with others, communicate, learn, and behave.
5.8	Mood disorders	This category includes disorders that impact a person’s emotional state and may result in long periods of extreme happiness, sadness, or both.
5.8.1	Bipolar disorders	This category includes chronic mood disorders that cause intense shifts in mood, energy levels, and behavior.
5.8.2	Depressive disorders	This category includes disorders characterized by persistently low or depressed mood and loss of interest in activities.
5.10	Schizophrenia and other psychotic disorders	This category includes a set of disorders characterized by a disconnection from reality, including schizophrenia and other psychotic disorders.
5.11	Alcohol-related disorders	This category includes disorders characterized by excessive use of and dependence on alcohol.
5.12	Substance-related disorders	This category includes disorders characterized by the inability to control the use of certain substances (e.g., opioids, cannabis, cocaine).
5.13	Suicide and intentional self-inflicted injury	This category relates to conditions involving suicide attempts and other intentional self-harm events (e.g., intentional poisonings, drownings).
Misc.	All Other Mental Health Conditions	This category includes all other mental health conditions not already enumerated, including conduct disorders, personality disorders (e.g., borderline, narcissistic, paranoid), impulse control disorders not classified elsewhere (i.e., not attention deficit / hyperactivity disorder), oppositional defiant disorder, childhood disorders like Tourette’s, and conditions like eating disorders, insomnia, and gender dysphoria. The following SAMHSA categories with low prevalence in the population have been collapsed to create this category: Conduct disorder (5.3.1); oppositional defiant disorder (5.3.2); disorders usually diagnosed in infancy childhood, or adolescence (5.6.3); impulse control disorders not elsewhere categorized (5.7); personality disorders (5.9); and miscellaneous mental disorders (5.15).

A small number of ICD-10-CM codes that fell within the mental health and substance use disorders coding range (i.e., F01–F99) were not included in the SAMHSA definitions (see [Appendix A](#)). The number of patients reported in the APCD claims data with these additional codes was low, and they were not included in the definition for this study to maintain consistency with SAMHSA’s reporting method and to support comparative reporting. Two SAMHSA categories – “Developmental disorders” and “Delirium, dementia, and amnestic and other cognitive disorders” – also were excluded from the mental health conditions.



To facilitate some of the more detailed reporting (e.g., geographical, co-occurring conditions, use of care), the SAMHSA categories were combined into the following higher-level classifications for patients with behavioral health conditions as well as a comparison group:

1. No BH Condition (No MH or SUD) – Comparison group
2. Any BH Condition (Any MH or SUD) – SAMHSA definition

The selection of these higher-level classifications helped to avoid the extensive blinding of results that otherwise would have been required to meet CMS suppression rules, which preclude the display of any cell with a denominator or numerator with a value of less than 11.

Chronic Conditions

Chronic conditions were identified using the CMS Chronic Condition Warehouse (CCW) flags. Logic is available at the following link: <https://www2.ccwdata.org/web/guest/condition-categories-chronic>.

Chronic condition flags allowed the identification of members with the following chronic conditions:

- Chronic obstructive pulmonary disease (COPD)
- Diabetes
- Heart disease
- Hypertension
- Kidney disease
- Obesity

Measure Specifications

This section describes the different measures used in the reporting and analysis.

Utilization Measures

For the 2025 Multi-State Behavioral Health Initiative dashboards, utilization measures included a variety of services listed in **Table 4**. In addition to counts of services, rates per 1,000 members were calculated and used in the reporting and analysis. Most of the visit measures were reported in total regardless of diagnosis to provide a comprehensive view of the healthcare use and needs of patients with behavioral health conditions. The count of services was identified at the medical claim level for most services, at the inpatient discharge level for inpatient services, and at the pharmacy claim level for prescriptions filled.

Several utilization measures were based on Current Procedural Terminology (CPT) and Healthcare Common Procedure Coding System (HCPCS) coding classifications found in the CMS Restructured BETOS Classification System (RBCS), which is an update of the original Berenson-Eggers Type of Service (BETOS) classification system.

Table 4. Utilization Measures Included in the Behavioral Health Dashboards

Measure	Description
Acute inpatient admissions	Number of acute inpatient admissions per 1,000 members
Crisis services	Number of crisis services per 1,000 members
Emergency department visits	Number of emergency department (ED) visits per 1,000 members
Outpatient office visits	Number of outpatient office visits per 1,000 members
Prescriptions filled	Number of total prescriptions filled per 1,000 members



Measure	Description
Primary care visits	Number of primary care visits per 1,000 members
Psychotherapy visits	Number of psychotherapy/counseling visits per 1,000 members with a primary diagnosis of MH/SUD
Telehealth visits	Number of telehealth visits per 1,000 members
Urgent Care visits	Number of urgent care visits per 1,000 members
Total medical services	Number of total medical services per 1,000 members

Methods for calculating the measures included the following:

- **Acute inpatient admissions.** Acute stays only. Nursing facility stays are excluded. Limited to facility claims.
- **Crisis services.** CPT/HCPCS code = 90839, 90840, H0007, H0009, H0010, H0011, H0017, H0038, S9484, T1016.
- **Emergency department visits.** Place of service code = 23; or revenue code = 0450–0459; or CPT code = 99281–99288. For analysis of members' rates of ED visits, facility and professional claims were grouped together.
- **Outpatient office visits.** Defined using RBCS subcategories for office/outpatient visits (EV), care management coordination (EM), home services (EH), ophthalmological services (EE), and hospice (EP).
- **Prescriptions filled.** Defined as the total count of claims in the pharmacy table (e.g., retail pharmacy claims). Does not include pharmacy reported in medical claims.
- **Primary care visits.** Includes selected taxonomy codes for family medicine, internal medicine, and pediatrics. Since the objective of including primary care in this study was to evaluate trends in behavioral health provided in a primary care setting, we have not used the typical narrow definition of primary care that restricts to certain procedure codes but instead look at any care provided by primary care doctors to see how many visits to these practitioners were related to behavioral health conditions.
- **Psychotherapy visits.** Defined as psychotherapy using the RBCS subcategory for behavioral health services (EB) with the RBCS sub-families for group therapy (5) and nongroup therapy (9).
- **Telehealth visits.** Defined as place of service = 2,10; CPT/HCPCS modifier code = 93, 95, FQ, G0, GQ, GT; revenue code = 0780; or CPT/HCPCS code = 98969, 99441, 99442, 99443, 99444, G0406, G0408, G0459, G0508, G0509, G2025, G2061, G2062, G2063, G9481, G9482, G9483, G9484, G9485, G9486, G9487, G9488, G9489, G9868, G9869, G9870, Q3014.
- **Urgent care visits.** Defined as place of service code = 20 or revenue code = 0456.
- **Total medical services.** Count of total claims in the medical claim table.



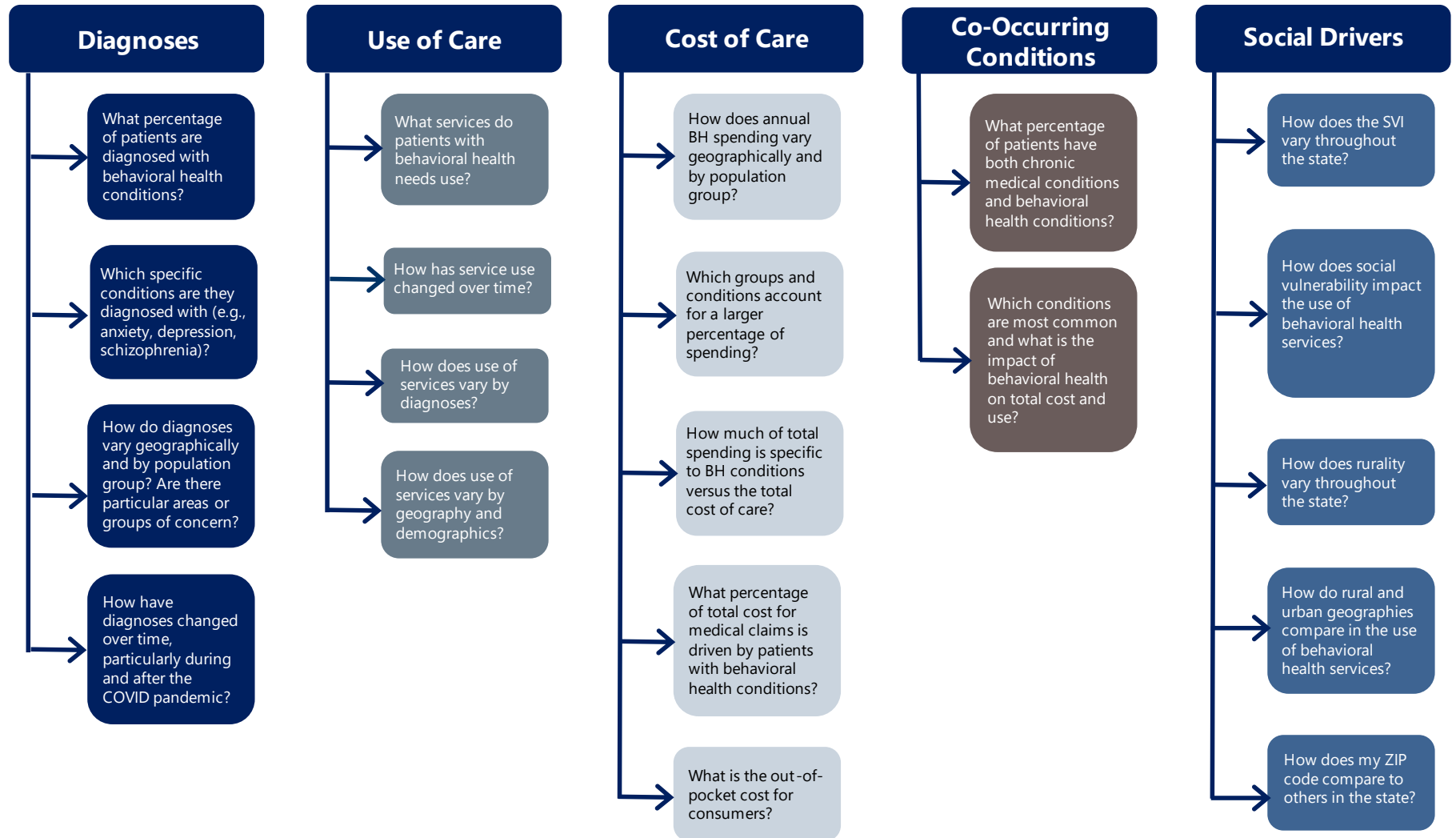
Cost Measures

The following measures were calculated for cost of care for reported behavioral health and medical conditions:

- **Total cost of care (per member per year).** This includes the total spending (plan payments plus member payments) for both medical and pharmacy claims during the year divided by average members. Average members are equal to member months divided by 12.
- **Total out-of-pocket (per member per year).** This includes the total member payments (i.e., copay, coinsurance, and deductible) for both medical and pharmacy claims during the year divided by average members. Average members are equal to member months divided by 12.
- **Cost for services with a primary diagnosis related to behavioral health.** Total PMPY spending is divided into two components – costs for services with a primary diagnosis related to BH and the spending for services with a primary diagnosis not related to BH.



Reporting Framework



Appendix A. SAMHSA Categories & ICD-10-CM Codes

Classification of patients diagnosed with a mental health or substance use disorder was based on methods described in the October 2022 “Mental Health Annual Report 2015–2020 – Use of Mental Health Services: National Client-Level Data” report from the U.S. Substance Abuse and Mental Health Services Administration (SAMHSA), which is available using the following link:
https://www.samhsa.gov/data/sites/default/files/reports/rpt38666/2020_MH-CLD%20Annual%20Report-508%20compliant_10212022_final.pdf

Appendix E in the SAMHSA report provided the categories and ICD-10-CM codes for each category. Please note: (1) The numbering used in the quoted SAMHSA material below mirrors the numbering used in their original report; (2) the italicized codes in parentheses are nonstandard ICD-10-CM codes in the data that were recognized by SAMHSA as belonging to the same mental health diagnostic group and were included in the SAMHSA definitions.

5.1 Trauma- and stressor-related disorders

F4310 F4320 F4321 F4322 F4323 F4324 F4325 F4329 F438
F439
(*F431* *F432*)

5.2 Anxiety disorders

F064 F4000 F4001 F4002 F4010 F4011 F40210 F40218 F40220
F40228 F40230 F40231 F40232 F40233 F40240 F40241 F40242 F40243
F40248 F40290 F40291 F40298 F408 F409 F410 F411 F413
F418 F419 F42 F422 F423 F424 F428 F429 F430
F4311 F4312 F488 F489 F930 R452 R453 R454 R455
R456 R457 R4581 R4582 R4583 R4584
(*F40* *F401* *F4021* *F4022* *F4023* *F4024* *F4029* *F41* *F93*)

5.3.1 Conduct disorder

F910 F911 F912 F918 F919

5.3.2 Oppositional defiant disorder

F913

5.3.3 Attention deficit/hyperactivity

F900 F901 F902 F908 F909 R460 R461 R462 R463
R464 R465 R466 R467 R4681 R4689
(*F90* *R46*)

5.6 Disorders usually diagnosed in infancy, childhood, or adolescence

F642 F842 F938 F939 F940 F941 F942 F948 F949
F950 F951 F952 F958 F959 F980 F981 F9821 F9829



F983 F984 F988 F989
(F94 F95 F98)

5.6.3 Pervasive developmental disorders

F840 F843 F845 F848 F849
(F84)

5.7 Impulse control disorders not elsewhere classified

F630 F631 F632 F633 F6381 F6389 F639 R45850
(F63 R4585)

5.8 Mood disorders

F0630 F0631 F0632 F0633 F0634 F3010 F3011 F3012 F3013
F302 F303 F304 F308 F309 F340 F341 F348 F3481
F3489 F349 F39 R4586
(F063 F301 F34)

5.8.1 Bipolar disorders

F310 F3110 F3111 F3112 F3113 F312 F3130 F3131 F3132
F314 F315 F3160 F3161 F3162 F3163 F3164 F3170 F3171
F3172 F3173 F3174 F3175 F3176 F3177 F3178 F3181 F3189
F319
(F31 F311 F313 F316 F317 F318)

5.8.2 Depressive disorders

F320 F321 F322 F323 F324 F325 F328 F3281 F3289
F329 F330 F331 F332 F333 F3340 F3341 F3342 F338
F339
(F32 F33 F334)

5.9 Personality disorders

F600 F601 F602 F603 F604 F605 F606 F607 F6081
F6089 F609 F69
(F60)

5.10 Schizophrenia and other psychotic disorders

F060 F062 F200 F201 F202 F203 F205 F2081 F2089
F209 F21 F22 F23 F24 F250 F251 F258 F259
F28 F29
(F06 F20 F25)



5.11 Alcohol-related disorders

F1010	F1011	F10120	F10121	F10129	F1014	F10150	F10151	F10159
F10180	F10181	F10182	F10188	F1019	F1020	F1021	F10220	F10221
F10229	F10230	F10231	F10232	F10239	F1024	F10250	F10251	F10259
F1026	F1027	F10280	F10281	F10282	F10288	F1029	F10920	F10921
F10929	F1094	F10950	F10951	F10959	F1096	F1097	F10980	F10981
F10982	F10988	F1099	G621	I426	K2920	K2921	K700	K7010
K7011	K702	K7030	K7031	K7040	K709	O99310	O99311	O99312
O99313	O99314	O99315	P043	Q860				
<i>(F10</i>	<i>F101</i>	<i>F1012</i>	<i>F1015</i>	<i>F1018</i>	<i>F102</i>	<i>F1022</i>	<i>F1023</i>	<i>F1025</i>
<i>F1028</i>	<i>F109</i>	<i>F1092</i>	<i>F1095</i>	<i>F1098</i>	<i>K70</i>	<i>K703</i>	<i>K704</i>	<i>O9931</i>
<i>Q86)</i>								

5.12 Substance-related disorders

F1110	F1111	F11120	F11121	F11122	F11129	F1113	F1114	F11150
F11151	F11159	F11181	F11182	F11188	F1119	F1120	F1121	F11220
F11221	F11222	F11229	F1123	F1124	F11250	F11251	F11259	F11281
F11282	F11288	F1129	F1190	F11920	F11921	F11922	F11929	F1193
F1194	F11950	F11951	F11959	F11981	F11982	F11988	F1199	F1210
F12120	F12121	F12122	F12129	F1213	F12150	F12151	F12159	F12180
F12188	F1219	F1220	F1221	F12220	F12221	F12222	F12229	F1223
F12250	F12251	F12259	F12280	F12288	F1229	F1290	F12920	F12921
F12922	F12929	F12950	F12951	F12959	F12980	F12988	F1299	F1310



F1311	F13120	F13121	F13129	F1314	F13150	F13151	F13159	F13180
F13181	F13182	F13188	F1319	F1320	F1321	F13220	F13221	F13229
F13230	F13231	F13232	F13239	F1324	F13250	F13251	F13259	F1326
F1327	F13280	F13281	F13282	F13288	F1329	F1390	F13920	F13921
F13929	F13930	F13931	F13932	F13939	F1394	F13950	F13951	F13959
F1396	F1397	F13980	F13981	F13982	F13988	F1399	F1410	F14120
F14121	F14122	F14129	F1414	F14150	F14151	F14159	F14180	F14181
F14182	F14188	F1419	F1420	F1421	F14220	F14221	F14222	F14229
F1423	F1424	F14250	F14251	F14259	F14280	F14281	F14282	F14288
F1429	F1490	F14920	F14921	F14922	F14929	F1494	F14950	F14951
F14959	F14980	F14981	F14982	F14988	F1499	F1510	F15120	F15121
F15122	F15129	F1514	F15150	F15151	F15159	F15180	F15181	F15182
F15188	F1519	F1520	F1521	F15220	F15221	F15222	F15229	F1523
F1524	F15250	F15251	F15259	F15280	F15281	F15282	F15288	F1529
F1590	F15920	F15921	F15922	F15929	F1593	F1594	F15950	F15951
F15959	F15980	F15981	F15982	F15988	F1599	F1610	F1611	F16120
F16121	F16122	F16129	F1614	F16150	F16151	F16159	F16180	F16183
F16188	F1619	F1620	F1621	F16220	F16221	F16229	F1624	F16250
F16251	F16259	F16280	F16283	F16288	F1629	F1690	F16920	F16921
F16929	F1694	F16950	F16951	F16959	F16980	F16983	F16988	F1699
F17200	F17201	F17203	F17208	F17209	F17210	F17211	F17213	F17218
F17219	F17220	F17221	F17223	F17228	F17229	F17290	F17291	F17293



F17298	F17299	F1810	F1811	F18120	F18121	F18129	F1814	F18150
F18151	F18159	F1817	F18180	F18188	F1819	F1820	F1821	F18220
F18221	F18229	F1824	F18250	F18251	F18259	F1827	F18280	F18288
F1829	F1890	F18920	F18921	F18929	F1894	F18950	F18951	F18959
F1897	F18980	F18988	F1899	F1910	F19120	F19121	F19122	F19129
F1914	F19150	F19151	F19159	F1916	F1917	F19180	F19181	F19182
F19188	F1919	F1920	F1921	F19220	F19221	F19222	F19229	F19230
F19231	F19232	F19239	F1924	F19250	F19251	F19259	F1926	F1927
F19280	F19281	F19282	F19288	F1929	F1990	F19920	F19921	F19922
F19929	F19930	F19931	F19932	F19939	F1994	F19950	F19951	F19959
F1996	F1997	F19980	F19981	F19982	F19988	F1999	F550	F551
F552	F553	F554	F558	O355XX0	O355XX1	O355XX2	O355XX3	O355XX4
O355XX5	O355XX9	O99320	O99321	O99322	O99323	O99324	O99325	P0441
P0449	P961	P962	T400X1A	T400X1D	T400X1S	T400X3A	T400X3D	T400X3S
T400X4A	T400X4D	T400X4S	T400X5A	T400X5D	T400X5S	T400X6A	T400X6D	T400X6S
T401X1A	T401X1D	T401X1S	T401X3A	T401X3D	T401X3S	T401X4A	T401X4D	T401X4S
T401X5A	T401X5D	T401X5S	T405X1A	T405X1D	T405X1S	T405X3A	T405X3D	T405X3S
T405X4A	T405X4D	T405X4S	T405X5A	T405X5D	T405X5S	T405X6A	T405X6D	T405X6S
T407X1A	T407X1D	T407X1S	T407X3A	T407X3D	T407X3S	T407X4A	T407X4D	T407X4S
T407X5A	T407X5D	T407X5S	T407X6A	T407X6D	T407X6S	T408X1A	T408X1D	T408X1S
T408X3A	T408X3D	T408X3S	T408X4A	T408X4D	T408X4S	T408X5A	T408X5D	T408X5S
T40901A	T40901D	T40901S	T40903A	T40903D	T40903S	T40904A	T40904D	T40904S



T40905A	T40905D	T40905S	T40906A	T40906D	T40906S	T40991A	T40991D	T40991S
T40993A	T40993D	T40993S	T40994A	T40994D	T40994S	T40995A	T40995D	T40995S
T40996A	T40996D	T40996S						

5.13 Suicide and intentional self-inflicted injury

R45851	T1491	T360X2A	T360X2D	T360X2S	T361X2A	T361X2D	T361X2S	T362X2A
T362X2D	T362X2S	T363X2A	T363X2D	T363X2S	T364X2A	T364X2D	T364X2S	T365X2A
T365X2D	T365X2S	T366X2A	T366X2D	T366X2S	T367X2A	T367X2D	T367X2S	T368X2A
T368X2D	T368X2S	T3692XA	T3692XD	T3692XS	T370X2A	T370X2D	T370X2S	T371X2A
T371X2D	T371X2S	T372X2A	T372X2D	T372X2S	T373X2A	T373X2D	T373X2S	T374X2A
T374X2D	T374X2S	T375X2A	T375X2D	T375X2S	T378X2A	T378X2D	T378X2S	T3792XA
T3792XD	T3792XS	T380X2A	T380X2D	T380X2S	T381X2A	T381X2D	T381X2S	T382X2A
T382X2D	T382X2S	T383X2A	T383X2D	T383X2S	T384X2A	T384X2D	T384X2S	T385X2A
T385X2D	T385X2S	T386X2A	T386X2D	T386X2S	T387X2A	T387X2D	T387X2S	T38802A
T38802D	T38802S	T38812A	T38812D	T38812S	T38892A	T38892D	T38892S	T38902A
T38902D	T38902S	T38992A	T38992D	T38992S	T39012A	T39012D	T39012S	T39092A
T39092D	T39092S	T391X2A	T391X2D	T391X2S	T392X2A	T392X2D	T392X2S	T39312A
T39312D	T39312S	T39392A	T39392D	T39392S	T394X2A	T394X2D	T394X2S	T398X2A
T398X2D	T398X2S	T3992XA	T3992XD	T3992XS	T400X2A	T400X2D	T400X2S	T401X2A
T401X2D	T401X2S	T402X2A	T402X2D	T402X2S	T403X2A	T403X2D	T403X2S	T404X2A
T404X2D	T404X2S	T405X2A	T405X2D	T405X2S	T40602A	T40602D	T40602S	T40692A
T40692D	T40692S	T407X2A	T407X2D	T407X2S	T408X2A	T408X2D	T408X2S	T40902A
T40902D	T40902S	T40992A	T40992D	T40992S	T410X2A	T410X2D	T410X2S	T411X2A
T411X2D	T411X2S	T41202A	T41202D	T41202S	T41292A	T41292D	T41292S	T413X2A
T413X2D	T413X2S	T4142XA	T4142XD	T4142XS	T415X2A	T415X2D	T415X2S	T420X2A
T420X2D	T420X2S	T421X2A	T421X2D	T421X2S	T422X2A	T422X2D	T422X2S	T423X2A
T423X2D	T423X2S	T424X2A	T424X2D	T424X2S	T425X2A	T425X2D	T425X2S	T426X2A
T426X2D	T426X2S	T4272XA	T4272XD	T4272XS	T428X2A	T428X2D	T428X2S	T43012A
T43012D	T43012S	T43022A	T43022D	T43022S	T431X2A	T431X2D	T431X2S	T43202A
T43202D	T43202S	T43212A	T43212D	T43212S	T43222A	T43222D	T43222S	T43292A
T43292D	T43292S	T433X2A	T433X2D	T433X2S	T434X2A	T434X2D	T434X2S	T43502A
T43502D	T43502S	T43592A	T43592D	T43592S	T43602A	T43602D	T43602S	T43612A
T43612D	T43612S	T43622A	T43622D	T43622S	T43632A	T43632D	T43632S	T43692A
T43692D	T43692S	T438X2A	T438X2D	T438X2S	T4392XA	T4392XD	T4392XS	T440X2A
T440X2D	T440X2S	T441X2A	T441X2D	T441X2S	T442X2A	T442X2D	T442X2S	T443X2A
T443X2D	T443X2S	T444X2A	T444X2D	T444X2S	T445X2A	T445X2D	T445X2S	T446X2A

T446X2D	T446X2S	T447X2A	T447X2D	T447X2S	T448X2A	T448X2D	T448X2S	T44902A
T44902D	T44902S	T44992A	T44992D	T44992S	T450X2A	T450X2D	T450X2S	T451X2A
T451X2D	T451X2S	T452X2A	T452X2D	T452X2S	T453X2A	T453X2D	T453X2S	T454X2A
T454X2D	T454X2S	T45512A	T45512D	T45512S	T45522A	T45522D	T45522S	T45602A
T45602D	T45602S	T45612A	T45612D	T45612S	T45622A	T45622D	T45622S	T45692A
T45692D	T45692S	T457X2A	T457X2D	T457X2S	T458X2A	T458X2D	T458X2S	T4592XA
T4592XD	T4592XS	T460X2A	T460X2D	T460X2S	T461X2A	T461X2D	T461X2S	T462X2A
T462X2D	T462X2S	T463X2A	T463X2D	T463X2S	T464X2A	T464X2D	T464X2S	T465X2A
T465X2D	T465X2S	T466X2A	T466X2D	T466X2S	T467X2A	T467X2D	T467X2S	T468X2A
T468X2D	T468X2S	T46902A	T46902D	T46902S	T46992A	T46992D	T46992S	T470X2A
T470X2D	T470X2S	T471X2A	T471X2D	T471X2S	T472X2A	T472X2D	T472X2S	T473X2A
T473X2D	T473X2S	T474X2A	T474X2D	T474X2S	T475X2A	T475X2D	T475X2S	T476X2A
T476X2D	T476X2S	T477X2A	T477X2D	T477X2S	T478X2A	T478X2D	T478X2S	T4792XA
T4792XD	T4792XS	T480X2A	T480X2D	T480X2S	T481X2A	T481X2D	T481X2S	T48202A
T48202D	T48202S	T48292A	T48292D	T48292S	T483X2A	T483X2D	T483X2S	T484X2A
T484X2D	T484X2S	T485X2A	T485X2D	T485X2S	T486X2A	T486X2D	T486X2S	T48902A
T48902D	T48902S	T48992A	T48992D	T48992S	T490X2A	T490X2D	T490X2S	T491X2A
T491X2D	T491X2S	T492X2A	T492X2D	T492X2S	T493X2A	T493X2D	T493X2S	T494X2A
T494X2D	T494X2S	T495X2A	T495X2D	T495X2S	T496X2A	T496X2D	T496X2S	T497X2A
T497X2D	T497X2S	T498X2A	T498X2D	T498X2S	T4992XA	T4992XD	T4992XS	T500X2A
T500X2D	T500X2S	T501X2A	T501X2D	T501X2S	T502X2A	T502X2D	T502X2S	T503X2A
T503X2D	T503X2S	T504X2A	T504X2D	T504X2S	T505X2A	T505X2D	T505X2S	T506X2A
T506X2D	T506X2S	T507X2A	T507X2D	T507X2S	T508X2A	T508X2D	T508X2S	T50902A
T50902D	T50902S	T50992A	T50992D	T50992S	T50A12A	T50A12D	T50A12S	T50A22A
T50A22D	T50A22S	T50A92A	T50A92D	T50A92S	T50B12A	T50B12D	T50B12S	T50B92A
T50B92D	T50B92S	T50Z12A	T50Z12D	T50Z12S	T50Z92A	T50Z92D	T50Z92S	T510X2A
T510X2D	T510X2S	T511X2A	T511X2D	T511X2S	T512X2A	T512X2D	T512X2S	T513X2A
T513X2D	T513X2S	T518X2A	T518X2D	T518X2S	T5192XA	T5192XD	T5192XS	T520X2A
T520X2D	T520X2S	T521X2A	T521X2D	T521X2S	T522X2A	T522X2D	T522X2S	T523X2A
T523X2D	T523X2S	T524X2A	T524X2D	T524X2S	T528X2A	T528X2D	T528X2S	T5292XA
T5292XD	T5292XS	T530X2A	T530X2D	T530X2S	T531X2A	T531X2D	T531X2S	T532X2A
T532X2D	T532X2S	T533X2A	T533X2D	T533X2S	T534X2A	T534X2D	T534X2S	T535X2A
T535X2D	T535X2S	T536X2A	T536X2D	T536X2S	T537X2A	T537X2D	T537X2S	T5392XA
T5392XD	T5392XS	T540X2A	T540X2D	T540X2S	T541X2A	T541X2D	T541X2S	T542X2A
T542X2D	T542X2S	T543X2A	T543X2D	T543X2S	T5492XA	T5492XD	T5492XS	T550X2A
T550X2D	T550X2S	T551X2A	T551X2D	T551X2S	T560X2A	T560X2D	T560X2S	T561X2A
T561X2D	T561X2S	T562X2A	T562X2D	T562X2S	T563X2A	T563X2D	T563X2S	T564X2A
T564X2D	T564X2S	T565X2A	T565X2D	T565X2S	T566X2A	T566X2D	T566X2S	T567X2A



T567X2D	T567X2S	T56812A	T56812D	T56812S	T56892A	T56892D	T56892S	T5692XA
T5692XD	T5692XS	T570X2A	T570X2D	T570X2S	T571X2A	T571X2D	T571X2S	T572X2A
T572X2D	T572X2S	T573X2A	T573X2D	T573X2S	T578X2A	T578X2D	T578X2S	T5792XA
T5792XD	T5792XS	T5802XA	T5802XD	T5802XS	T5812XA	T5812XD	T5812XS	T582X2A
T582X2D	T582X2S	T588X2A	T588X2D	T588X2S	T5892XA	T5892XD	T5892XS	T590X2A
T590X2D	T590X2S	T591X2A	T591X2D	T591X2S	T592X2A	T592X2D	T592X2S	T593X2A
T593X2D	T593X2S	T594X2A	T594X2D	T594X2S	T595X2A	T595X2D	T595X2S	T596X2A
T596X2D	T596X2S	T597X2A	T597X2D	T597X2S	T59812A	T59812D	T59812S	T59892A
T59892D	T59892S	T5992XA	T5992XD	T5992XS	T600X2A	T600X2D	T600X2S	T601X2A
T601X2D	T601X2S	T602X2A	T602X2D	T602X2S	T603X2A	T603X2D	T603X2S	T604X2A
T604X2D	T604X2S	T608X2A	T608X2D	T608X2S	T6092XA	T6092XD	T6092XS	T6102XA
T6102XD	T6102XS	T6112XA	T6112XD	T6112XS	T61772A	T61772D	T61772S	T61782A
T61782D	T61782S	T618X2A	T618X2D	T618X2S	T6192XA	T6192XD	T6192XS	T620X2A
T620X2D	T620X2S	T621X2A	T621X2D	T621X2S	T622X2A	T622X2D	T622X2S	T628X2A
T628X2D	T628X2S	T6292XA	T6292XD	T6292XS	T63002A	T63002D	T63002S	T63012A
T63012D	T63012S	T63022A	T63022D	T63022S	T63032A	T63032D	T63032S	T63042A
T63042D	T63042S	T63062A	T63062D	T63062S	T63072A	T63072D	T63072S	T63082A
T63082D	T63082S	T63092A	T63092D	T63092S	T63112A	T63112D	T63112S	T63122A
T63122D	T63122S	T63192A	T63192D	T63192S	T632X2A	T632X2D	T632X2S	T63302A
T63302D	T63302S	T63312A	T63312D	T63312S	T63322A	T63322D	T63322S	T63332A
T63332D	T63332S	T63392A	T63392D	T63392S	T63412A	T63412D	T63412S	T63422A
T63422D	T63422S	T63432A	T63432D	T63432S	T63442A	T63442D	T63442S	T63452A
T63452D	T63452S	T63462A	T63462D	T63462S	T63482A	T63482D	T63482S	T63512A
T63512D	T63512S	T63592A	T63592D	T63592S	T63612A	T63612D	T63612S	T63622A
T63622D	T63622S	T63632A	T63632D	T63632S	T63692A	T63692D	T63692S	T63712A
T63712D	T63712S	T63792A	T63792D	T63792S	T63812A	T63812D	T63812S	T63822A
T63822D	T63822S	T63832A	T63832D	T63832S	T63892A	T63892D	T63892S	T6392XA
T6392XD	T6392XS	T6402XA	T6402XD	T6402XS	T6482XA	T6482XD	T6482XS	T650X2A
T650X2D	T650X2S	T651X2A	T651X2D	T651X2S	T65212A	T65212D	T65212S	T65222A
T65222D	T65222S	T65292A	T65292D	T65292S	T653X2A	T653X2D	T653X2S	T654X2A
T654X2D	T654X2S	T655X2A	T655X2D	T655X2S	T656X2A	T656X2D	T656X2S	T65812A
T65812D	T65812S	T65822A	T65822D	T65822S	T65832A	T65832D	T65832S	T65892A
T65892D	T65892S	T6592XA	T6592XD	T6592XS	T71112A	T71112D	T71112S	T71122A
T71122D	T71122S	T71132A	T71132D	T71132S	T71152A	T71152D	T71152S	T71162A
T71162D	T71162S	T71192A	T71192D	T71192S	T71222A	T71222D	T71222S	T71232A
T71232D	T71232S	X710XXA	X710XXD	X710XXS	X711XXA	X711XXD	X711XXS	X712XXA
X712XXD	X712XXS	X713XXA	X713XXD	X713XXS	X718XXA	X718XXD	X718XXS	X719XXA
X719XXD	X719XXS	X72XXXXA	X72XXXXD	X72XXXXS	X730XXA	X730XXD	X730XXS	X731XXA



X731XXD	X731XXS	X732XXA	X732XXD	X732XXS	X738XXA	X738XXD	X738XXS	X739XXA
X739XXD	X739XXS	X7401XA	X7401XD	X7401XS	X7402XA	X7402XD	X7402XS	X7409XA
X7409XD	X7409XS	X748XXA	X748XXD	X748XXS	X749XXA	X749XXD	X749XXS	X75XXXXA
X75XXXD	X75XXXS	X76XXXXA	X76XXXD	X76XXXS	X770XXA	X770XXD	X770XXS	X771XXA
X771XXD	X771XXS	X772XXA	X772XXD	X772XXS	X773XXA	X773XXD	X773XXS	X778XXA
X778XXD	X778XXS	X779XXA	X779XXD	X779XXS	X780XXA	X780XXD	X780XXS	X781XXA
X781XXD	X781XXS	X782XXA	X782XXD	X782XXS	X788XXA	X788XXD	X788XXS	X789XXA
X789XXD	X789XXS	X79XXXXA	X79XXXD	X79XXXS	X80XXXXA	X80XXXD	X80XXXS	X810XXA
X810XXD	X810XXS	X811XXA	X811XXD	X811XXS	X818XXA	X818XXD	X818XXS	X820XXA
X820XXD	X820XXS	X821XXA	X821XXD	X821XXS	X822XXA	X822XXD	X822XXS	X828XXA
X828XXD	X828XXS	X830XXA	X830XXD	X830XXS	X831XXA	X831XXD	X831XXS	X832XXA
X832XXD	X832XXS	X838XXA	X838XXD	X838XXS	Z915			
<i>(F11</i>	<i>F111</i>	<i>F1112</i>	<i>F1115</i>	<i>F112</i>	<i>F1122</i>	<i>F1125</i>	<i>F1128</i>	<i>F119</i>
<i>F1192</i>	<i>F1195</i>	<i>F1198</i>	<i>F12</i>	<i>F121</i>	<i>F1212</i>	<i>F1215</i>	<i>F1218</i>	<i>F122</i>
<i>F1222</i>	<i>F1225</i>	<i>F1228</i>	<i>F129</i>	<i>F1292</i>	<i>F1295</i>	<i>F1298</i>	<i>F13</i>	<i>F131</i>
<i>F1312</i>	<i>F1315</i>	<i>F1318</i>	<i>F132</i>	<i>F1322</i>	<i>F1323</i>	<i>F1325</i>	<i>F1328</i>	<i>F139</i>
<i>F1392</i>	<i>F1393</i>	<i>F1395</i>	<i>F1398</i>	<i>F14</i>	<i>F141</i>	<i>F1412</i>	<i>F1415</i>	<i>F1418</i>
<i>F142</i>	<i>F1422</i>	<i>F1425</i>	<i>F1428</i>	<i>F149</i>	<i>F1492</i>	<i>F1495</i>	<i>F1498</i>	<i>F15</i>
<i>F151</i>	<i>F1512</i>	<i>F1515</i>	<i>F1518</i>	<i>F152</i>	<i>F1522</i>	<i>F1525</i>	<i>F1528</i>	<i>F159</i>
<i>F1592</i>	<i>F1595</i>	<i>F1598</i>	<i>F16</i>	<i>F161</i>	<i>F1612</i>	<i>F1615</i>	<i>F1618</i>	<i>F162</i>
<i>F1622</i>	<i>F1625</i>	<i>F1628</i>	<i>F169</i>	<i>F1692</i>	<i>F1695</i>	<i>F1698</i>	<i>F17</i>	<i>F172</i>
<i>F1720</i>	<i>F1721</i>	<i>F1722</i>	<i>F1729</i>	<i>F18</i>	<i>F181</i>	<i>F1812</i>	<i>F1815</i>	<i>F1818</i>
<i>F182</i>	<i>F1822</i>	<i>F1825</i>	<i>F1828</i>	<i>F189</i>	<i>F1892</i>	<i>F1895</i>	<i>F1898</i>	<i>F19</i>
<i>F191</i>	<i>F1912</i>	<i>F1915</i>	<i>F1918</i>	<i>F192</i>	<i>F1922</i>	<i>F1923</i>	<i>F1925</i>	<i>F1928</i>
<i>F199</i>	<i>F1992</i>	<i>F1993</i>	<i>F1995</i>	<i>F1998</i>	<i>F55</i>	<i>O35XX)</i>		

5.15 Miscellaneous mental disorders

F061	F068	F440	F441	F442	F444	F445	F446	F447
F4481	F4489	F449	F450	F451	F4520	F4521	F4522	
F4529	F4541	F4542	F458	F459	F481	F5000	F5001	F5002
F502	F508	F5081	F5089	F509	F5101	F5102	F5103	F5104
F5105	F5109	F5111	F5112	F5113	F5119	F513	F514	F515
F518	F519	F520	F521	F5221	F5222	F5231	F5232	F524
F525	F526	F528	F529	F53	F54	F59	F640	F641
F648	F649	F650	F651	F652	F653	F654	F6550	F6551
F6552	F6581	F6589	F659	F66	F6810	F6811	F6812	F6813
F688	F99	O906	R37	R4589	Z87890	Z9183		
<i>(F44</i>	<i>F45</i>	<i>F50</i>	<i>F52</i>	<i>F64</i>	<i>F65</i>	<i>F681</i>	<i>Z8789)</i>	





Reliable data. Informed decisions. Strategic advantage.

12 Mountfort Street
Suite 201
Portland, ME 04101

207 623-2555

www.OnpointHealthData.org